

Electro-dynamic Vibration Test System

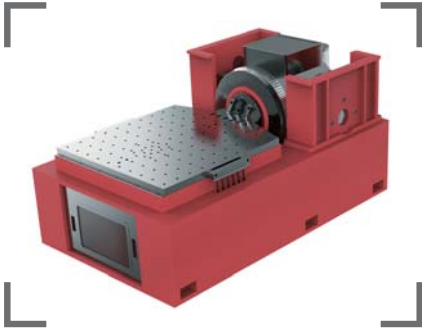
Low Force Series

Description:

The low force series shakers are featured by high operation frequency of armature, excellent index, high reliability and easy for operation. Typical fields of applications are electronic components, automotive parts, aerospace and aviation, etc.



Features:



- ① Adopt upper and lower guidance structure to ensure excellent performance and large anti-eccentric moment;
- ② The optimized armature is characterized by light mass, high vibration-resistance, good stiffness and high first resonance frequency;
- ③ Optimized magnetic circuit design to achieve higher magnetic circuit utilization and lower flux leakage;
- ④ Random excitation force is equivalent with sine excitation force;
- ⑤ Multi-interlock protection to ensure the safety of system and customer's specimen.

System model	TS1-150	TS1.5-150	TS2-150	TS3-150	TS6-230	TS10-240	TS20-320	TS20-445	TS20LS3-340
Sine(peak)/Random(rms)(kN)	1	1.5	2	3	6	10	20	20	20
Shock force(kN)	2	3	4	6	12	20	40/60	40/60	40/60
Frequency range(Hz)	5-4,500	5-4,500	5-4,500	5-4,000	5-3,500	5-3,000	5-3,000	5-2,800	5-3,000
Max.acceleration(m/s ²)	500	750	1,000	1,000	1,000	1,000	1,000	700	800
Max.velocity(m/s)	2	2	2	2	1.8	1.8	2	2	2
Max.displacement(mm)	25	25	25	25	51	51	51	51	76
Max.load(kg)	70	70	70	120	300	300	300	300	300
Mass of moving elements(kg)	2	2	2	3	6	10	20	28	25
Armature diameter(mm)	150	150	150	150	230	240	320	445	340
Body suspension natural frequency(Hz)	3	3	3	3	3	2.5	2.5	2.5	2.5
Power amplifier model	PWA1	PWA1.5	PWA2	PWA3	PWA6	PWA10	PWA20	PWA20	PWA20
Power(kVA)	1	1.5	2	3	6	10	20	20	20
Power requirement(kVA)	4	4.5	5.5	6.5	16	21	44	44	44
Cooling type	Air cooled	Air cooled	Air cooled	Air cooled	Air cooled	Air cooled	Air cooled	Air cooled	Air cooled